

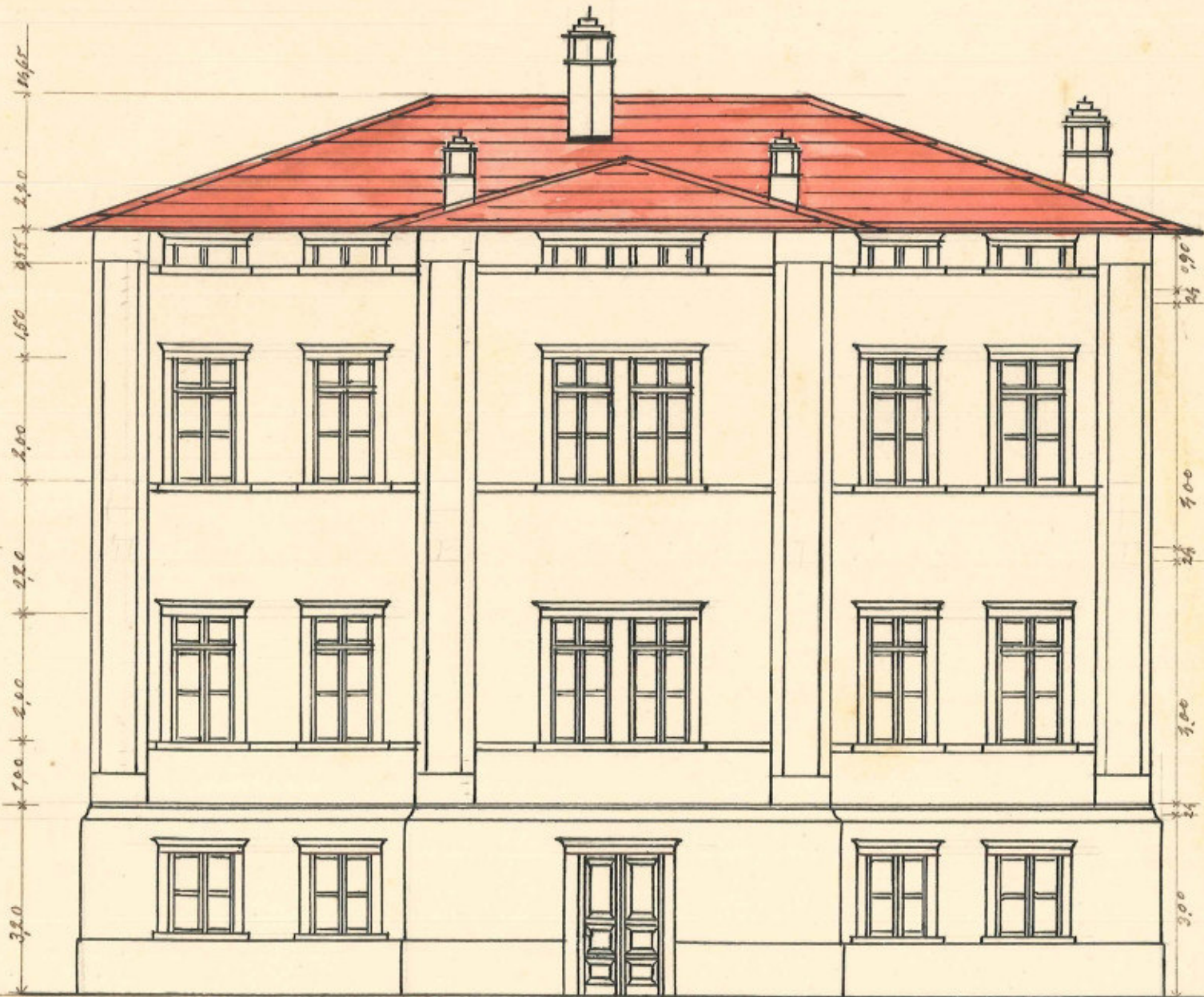
Piano di

Fabbrica nuova per le scuole popolari

di

Vigo - Cavalline

Prospetto a Settentrione. a. b.

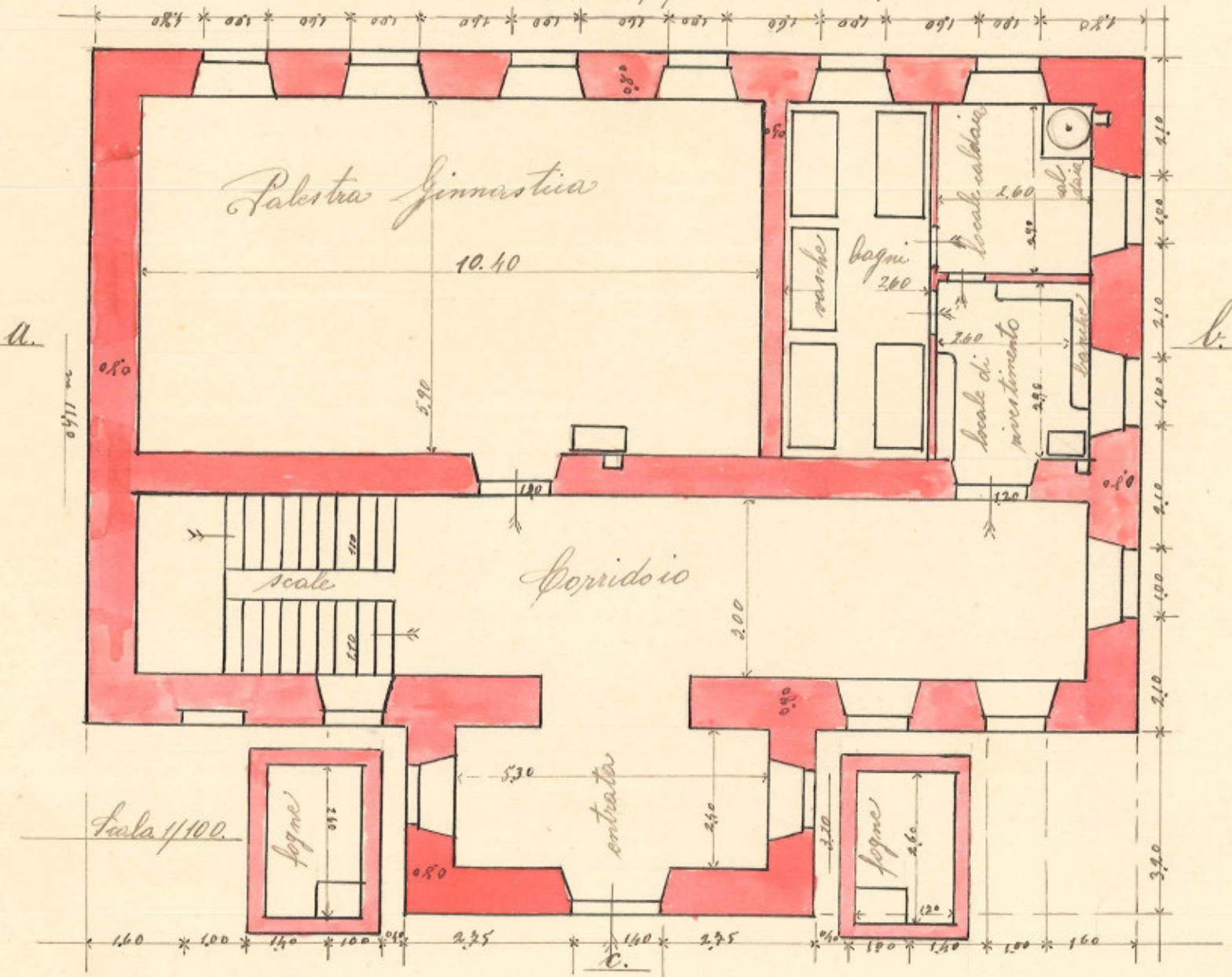


a. b.

Scala 1/100.

Piave terra d.
metri 14.90

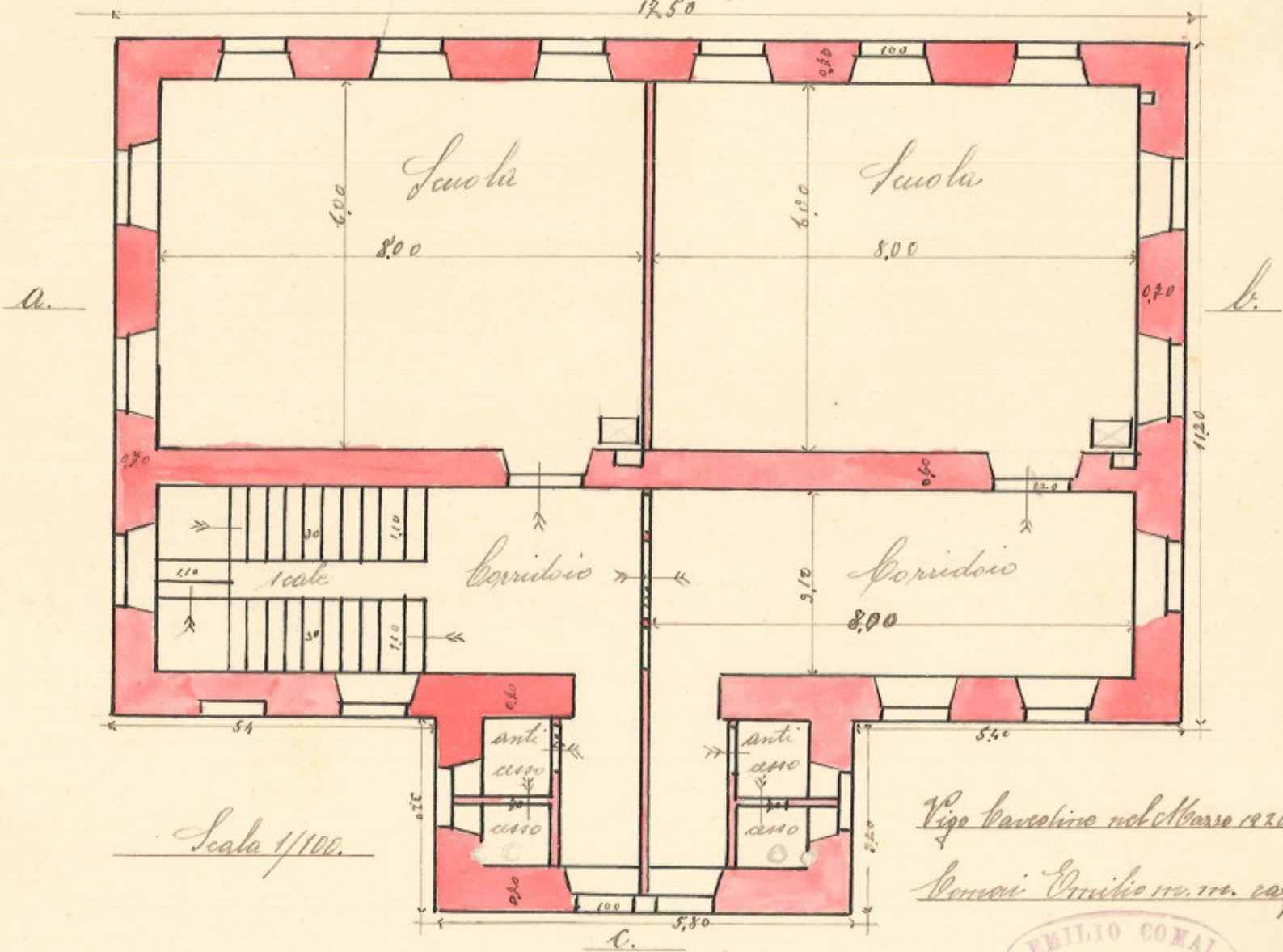
m 17.70



Primo piano.

d.

17,50



Scala 1/100.

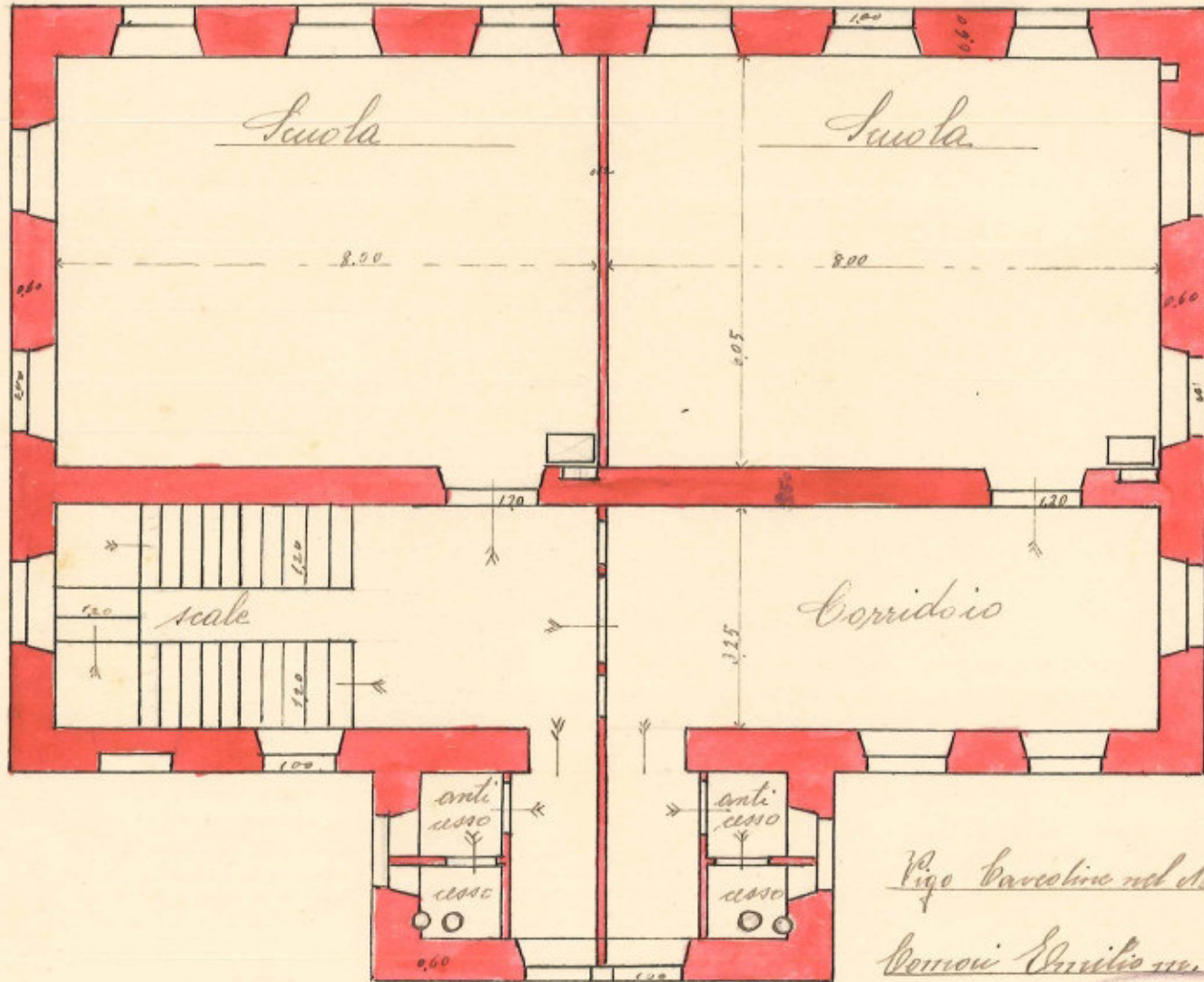
Vigo Caventine nel Marzo 1920

Scorari Emilio ing. arch. carp.



II Piano.

d.



b.

a.

Vigo Cavallino nel Marzo 1930

Bemmi Emilio m. m. carp.



Scala 1/100.

c.